



UK | DUBAI | MALAYSIA

BE FUTUREMADE

PSYCHOLOGY

FutureMade is to look to the future, strive for better, aim for higher, make history. A future that mirrors our pioneering roots in 1821, the year we founded the world's first Mechanics Institute. By choosing to study at Heriot-Watt today you will become part of a community working across boundaries and cultures. Collaborating with international business and industry to tackle the global challenges faced by the world we live in. Heriot-Watt undergraduates are highly employable and sought after by the best organisations worldwide.

Be **FutureMade**
▶ hw.ac.uk/Malaysia

**LOOK TO THE FUTURE.
STRIVE FOR BETTER.
AIM FOR HIGHER.
MAKE HISTORY.
BE AMBITIOUS.
BE BOLD.**

WE DEVELOP RESILIENT GRADUATES

Heriot-Watt University is aware of the challenges the youth of today face in terms of maintaining a healthy mindset, managing stress as well as developing meaningful social relationships in a landscape that has also become increasingly digitised. The university is no stranger to pioneering the global educational landscape with world-class programmes enhanced with a unique Positive Education approach.

Youth Transformation Programme (YTP)

Specially created for post-secondary school students, the Youth Transformation Programme has been designed to support every student to realise their full potential.

Students are encouraged to engage in a positive transformation by focusing on developing their emotional intelligence and creativity, understanding their own personalities, strengths and weaknesses, and developing a long-term vision and mission. This is done by setting realistic SMART goals through engaging and interesting activities. Using a proven emotional intelligence framework and engaging activities focusing on expressing positive emotions such as empathy and gratitude, students are taught self-awareness, self-management, social awareness and relationship management.

On completion of the YTP, students will develop a strong sense of self-confidence and an ability to express their emotions in a positive way, and be able to relate comfortably to their peers and better manage their relationship with friends and family, paving the way for a smooth transition to and preparing them for the challenges of University studies.

The YTP is open to students who have achieved a minimum of 5Cs in relevant subjects in SPM, IGCSE or equivalent. The programme objectives are:

- **Develop your own Vision and Mission**
- **Collaborate effectively to accomplish a project**
- **Identify your strengths, passion and potential**
- **Discover your study and career pathway**

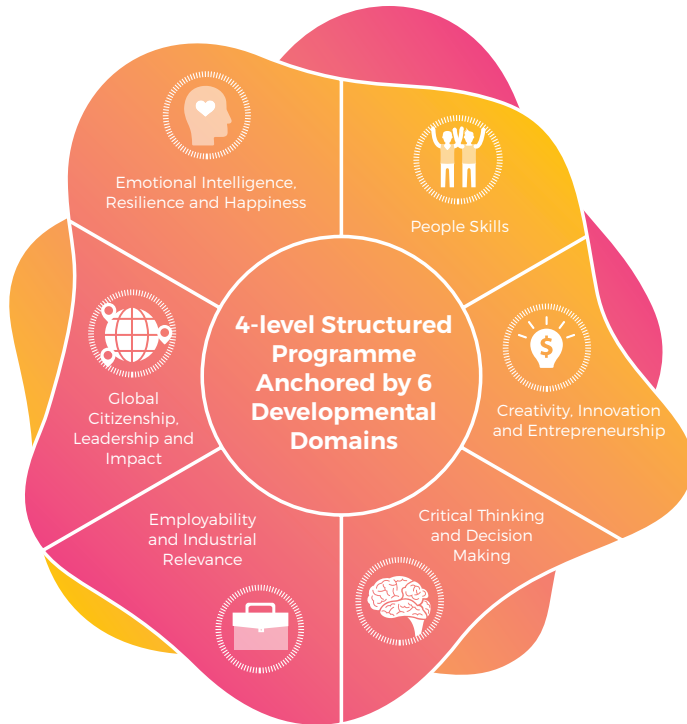
The following are some of the workshops under the YTP:

- **The Successful Mindset**
- **Ace It with Communication**
- **Creativity and Innovation**
- **Team Dynamics**
- **Emotional Intelligence**
- **Rewiring Your Brain**
- **Knowing Me, Myself and I**
- **Career Planning**
- **Project Showcase**

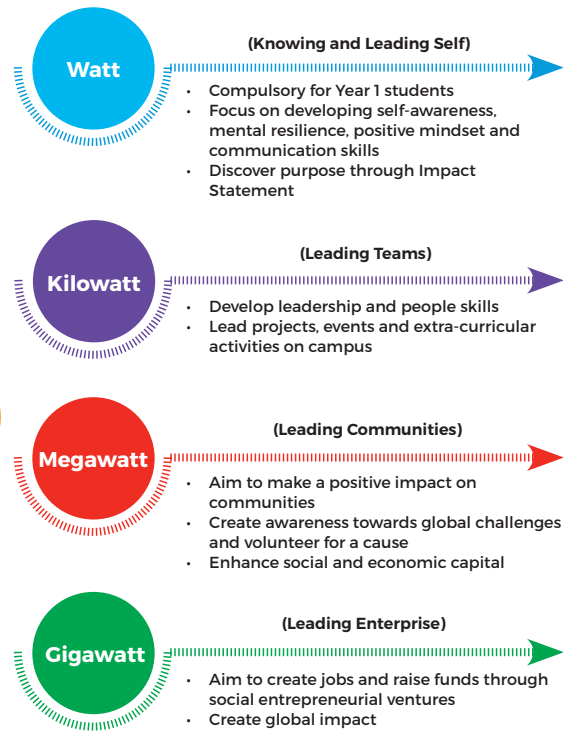


EmPOWER Programme

FEATURES



LEVELS



**Global
Citizenship,
Leadership &
Impact**



**Emotional
Intelligence,
Resilience &
Happiness**



**People
Skills**



**Creativity,
Innovation &
Entrepreneurship**



**Critical
Thinking
& Decision
Making**



**Employability
& Industrial
Relevance**

Watt Knowing & Leading Self	<ul style="list-style-type: none"> Defining impact (Impact Statement) Leadership style awareness 	<ul style="list-style-type: none"> Self-awareness Self-management Active & healthy lifestyle 	<ul style="list-style-type: none"> Effective communication Time management Gratitude 	<ul style="list-style-type: none"> Divergent thinking Facilitating discovery Opportunity finding 	<ul style="list-style-type: none"> Brainology Thinking biases Brain neurology Reframing & positive framing 	<ul style="list-style-type: none"> Preparing CV LinkedIn profile Career planning Career fair Prof. dev. plan
Kilowatt Leading Teams	<ul style="list-style-type: none"> Influencing through impact Awareness of the global challenges 	<ul style="list-style-type: none"> Social awareness Relationship management Return on failure 	<ul style="list-style-type: none"> Effective collaboration 	<ul style="list-style-type: none"> Lean startup Creating products, processes & services 	<ul style="list-style-type: none"> Evaluating claims Analysing inferences 	<ul style="list-style-type: none"> Business etiquette Applying knowledge in industrial contexts
Megawatt Leading Communities	<ul style="list-style-type: none"> Widening impact Resolving ethical challenges 	<ul style="list-style-type: none"> Leading at the happiness project 	<ul style="list-style-type: none"> Negotiation, mediation & persuasion 	<ul style="list-style-type: none"> Financial literacy Appreciating market & customers Raising funds 	<ul style="list-style-type: none"> Weighing decisions Analysing challenges 	<ul style="list-style-type: none"> Global industrial placement (work global)
Gigawatt Leading Enterprise	<ul style="list-style-type: none"> Global impact System thinking 	<ul style="list-style-type: none"> Supporting those under their care emotionally 	<ul style="list-style-type: none"> Lifelong learning 	<ul style="list-style-type: none"> Running an enterprise Blue ocean strategy 	<ul style="list-style-type: none"> Assessing risk 	<ul style="list-style-type: none"> Impacting industrial practice Creating jobs

PROGRAMME STRUCTURE



EMPLOYER TESTIMONIALS



The EmPOWER Programme enables students to be in charge of charting their developmental needs and becoming intentional lifelong learners and will definitely make Heriot-Watt University graduates both highly employable and future-ready.

AINOL YAACOB
HEAD OF COUNTRY,
BP MALAYSIA



The EmPOWER Programme is certainly a great initiative by Heriot-Watt University Malaysia to prepare graduates to be industry-ready. Students will be shaped to think about the greater purpose with focus on soft skills that are fundamental when joining the workforce. Employers are looking for that differentiating factor in today's disruptive business environment. A structured programme such as this will be beneficial to increase students' employability.

**MUHAMMAD AZMI
BIN ZULKIFLI**
ACTING CEO, INVEST KL



I am delighted to see the EmPOWER Programme promoting global citizenship and a comprehensive set of 21st Century skills amongst the students of Heriot-Watt University Malaysia. The Programme will go a long way towards making them not only highly employable but also highly impactful citizens of the world.

SARAH DEVERALL
DIRECTOR MALAYSIA,
BRITISH COUNCIL

STUDENT TESTIMONIALS



BEng (HONS)
MECHANICAL ENGINEERING

MOHAMED SYAFIQ BIN SALLEH

"The EmPOWER Programme made me realise that NO GOAL is worth missing out on! The programme has encouraged me to look inward, understand myself and analyse what is important to me. It has enabled me to understand new perspectives of my surroundings and the world."



BEng (HONS)
CIVIL ENGINEERING

VALENTINA NICSON

"The community service component of this course helped bring our Impact Statement to life. It helped to boost life skills such as leadership, teamwork and communication through how we form our group, propose an event and negotiate and manage conflict among the group members. I personally vouch for the EmPOWER Programme and would highly recommend this course to continuously EmPOWER our Heriot-Watt community."



BSc (HONS)
ACTUARIAL SCIENCE

ARISSA NOORDINA BAHARI
BT MOHD AMIR SHAHRIL BAHARI

"The EmPOWER Programme, specifically the module on Impact Statement, had the students reflect on the past, the present and the future. In the present module, students had to come up with our *ikigai*, a Japanese concept for our reason for being. *Ikigai* is the intersection between what you love, what you are good at, what you get paid for and what the world needs. Leave one out and life becomes unfulfilled."

STUDY AND SEE THE WORLD

At Heriot-Watt, you have the opportunity to enjoy a truly international experience. We are one of the world's top universities for international student mix and you have the chance to become a global student by taking part in an Inter-Campus Transfer to our Scottish or Dubai campuses.



Campus transfers are guaranteed

as long as your programme is available at the campus you are transferring to and you meet progression requirements

20%

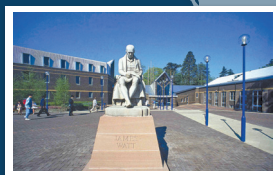
Tuition fee waiver
off Dubai or UK
tuition fees when you transfer



Study for as little as one semester
at one of our global campuses



Study at our global campuses
until completion



Edinburgh, Orkney & the Scottish Borders, Scotland, UK



Dubai, UAE



Putrajaya, MALAYSIA

About Our Programmes

BSc (HONS) PSYCHOLOGY

KPT/JPS (N/311/6/0081) (PA8056) 04/21

Intake: September

Our Psychology graduates have a strong record of employment, building careers in business, teaching, counselling, nursing, probation work and market research.

Psychology is the science of behaviour and the mind. It uses a variety of scientific methods to explore key areas, including the influence that our biology has on behaviour; the ways in which we develop from early infancy to adulthood; the ways in which we perceive, think, solve problems and make decisions; and the way we interact with each other. All of these approaches enable theories to be developed and tested within psychology. Our programmes focus on problems in the real world and consider how psychology can help us to address it.

Psychologists work in settings such as education, health and mental ill-health, sport and exercise, systems design, the environment, and forensic and criminological analysis, where theory and practice come together.

This programme is accredited by the Malaysian Qualifications Agency (MQA). In accordance with our normal practice, our professionally orientated programmes are designed to meet the educational requirements for membership of relevant professional institutions. In addition to recognition within Malaysia, we seek accreditation by the relevant UK or international professional bodies in accordance with their standard procedures.

CORE COURSES

YEAR 1

- Cognitive Psychology 1
- Human Development and Intelligence
- Research Methods and Analysis 3 and 4
- Cognitive Psychology 2
- Social Psychology
- Philosophy and History of Psychology

Optional Courses:

- Human Resource Management
- Organisational Behaviour

YEAR 2

- Cognition Across Life Span
- Research Method and Analysis 5
- Research Method and Analysis 6
- Intelligence at Work
- Psychobiology
- Social Cognition and Personality
- Industrial Training

Optional Courses:

- Forensic Psychology
- Applied Psychology: Health Psychology and Professional Practice

YEAR 3

Research Project

- Psychology of Education
- Advanced Social Psychology

Optional Subjects:

- Cognition and Emotion
- Industrial and Organisational Psychology
- Consciousness
- Psychology and Mental Health

BSc (HONS) PSYCHOLOGY WITH MANAGEMENT

KPT/JPS (N/311/6/0075) (FA5343) 08/20

Intake: September

Psychology is the scientific study of the relationship between mind and behaviour. It asks why people, in general, behave as they do and why some people behave in unexpected or atypical ways. Findings from psychological studies help us to enhance people's everyday experiences and improve lives.

Psychologists employ a wide range of research skills such as observations, surveys and experiments. This Bachelor's degree aims to introduce you to these scientific methods and the critical evaluations that go into answering important questions from a psychological perspective.

The psychology component of the programme (70%) covers the discipline's main areas, namely social psychology, developmental psychology, cognitive psychology, biological psychology, individual differences and research methods, and emphasises their application to various employment-related contexts. The management component of the programme (30%) introduces a range of topics that are relevant to psychology such as consumer behaviour, marketing, human resource management and project management.

This programme is accredited by the Malaysian Qualifications Agency (MQA). In accordance with our normal practice, our professionally orientated programmes are designed to meet the educational requirements for membership of relevant professional institutions. In addition to recognition within Malaysia, we seek accreditation by the relevant UK or international professional bodies in accordance with their standard procedures.

YEAR 1

- Cognitive Psychology 1
- Human Development and Intelligence
- Research Methods and Analysis 3
- Research Methods and Analysis 4
- Cognitive Psychology 2
- Social Psychology
- Philosophy and History of Psychology

Optional Courses:

- Human Resource Management
- Organisational Behaviour

YEAR 2

- Cognition Across Life Span
- Research Method and Analysis 5
- Research Method and Analysis 6
- Intelligence at Work
- Psychobiology
- Social Cognition and Personality
- Industrial Training

Optional Courses:

- Business Venturing
- Resourcing and Talent Management
- Innovation Management
- Critical Approaches to Management

YEAR 3

- Research Project
- Psychology of Education
- Advanced Social Psychology

Optional Courses:

- Changing Trends in Employment
- The Contemporary Workforce
- Industrial and Organisational Psychology
- Cognition and Emotion
- Psychology and Mental Health
- Consciousness

Future**Made** in
Psychology

Zulaikha Binti Zainul Rizam's Story

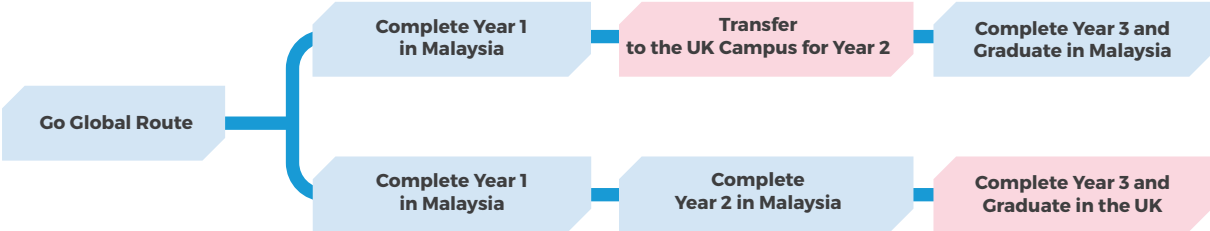
“Heriot-Watt appealed to me because, compared to other universities, it distinguishes itself by focusing on courses that are industry-relevant. My lecturers are very qualified and passionate, and they are always available whenever you require help. My experience has opened my perspective to other careers in business, which I had not considered before.”

Zulaikha Binti Zainul Rizam
3rd Year, Psychology with Management
Former School: Dwi Emas International School



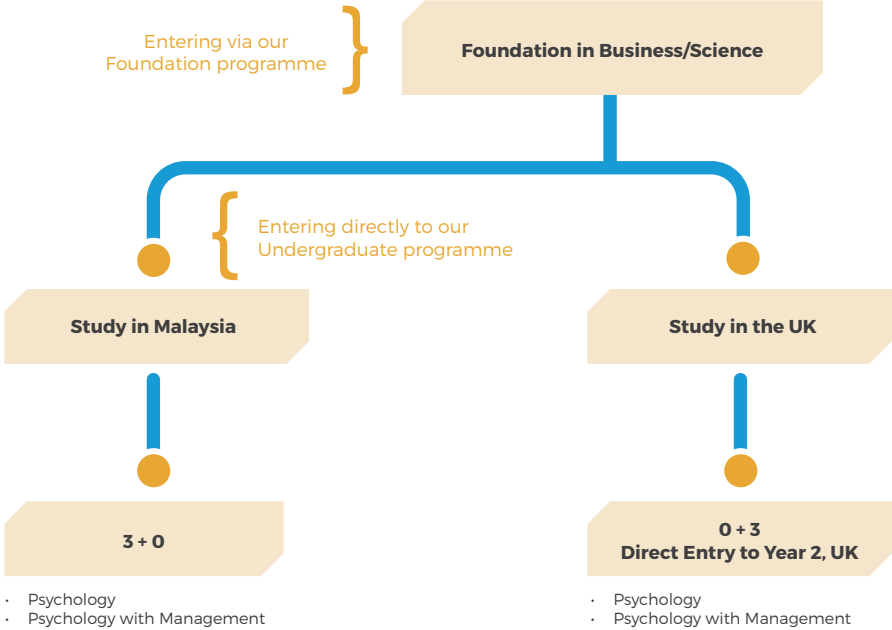
Your Study Pathway

Choose the Go Global Route



* Only possible for programmes available in both Malaysia and UK campuses

Or Choose to Study in Malaysia or Transfer Directly to the UK



Malaysia and UK Equivalency	
Malaysia Foundation Programme	Year 1, UK
Year 1, Malaysia Campus	Year 2, UK
Year 2, Malaysia Campus	Year 3, UK
Year 3, Malaysia Campus	Year 4, UK

Entry to the UK campus is contingent upon agreed progression rules and entry requirements that are set by the UK campus. Please check with the Registry when you are making plans to do your transfer.

Summary of Entry Requirements

Foundation Intakes: April, July and September

FOUNDATION PROGRAMME				
Programme Name	Qualification		Subject Requirement	
	SPM/IGCSE	SMA 3 (Indo)		
Foundation in Science	5Cs	6.0	English, Mathematics, Additional Mathematics, Physics and Chemistry	Progression to your chosen undergraduate programme may require pre-requisite subjects with specific grades at the SPM/IGCSE/Equivalent levels in addition to your Foundation results.
Foundation in Business	5Cs	6.0	English and Mathematics and other relevant subjects	
Foundation in Business (Actuarial Science Route)	5Cs	6.0	English, Mathematics, Additional Mathematics and other relevant subjects	
Foundation in Business (Psychology Route)	5Cs	6.0	English, Science, Mathematics and other relevant subjects	

UNDERGRADUATE PROGRAMMES									
Programme Name	Qualification								Pre-requisite Subjects
	STPM/A-Level	IB Diploma	SMA 3	UEC	WACE/SACE	*CPU	Fis	FIB	
BSc (Hons) Psychology BSc (Hons) Psychology with Management	CCC	25 points	7.5	2A 3B	ATAR 70	70%	CCCC	CCCC	Minimum C in Science and Maths at SPM/IGCSE or equivalent.

*CPU: based on six best relevant subjects including English (average score)

ENGLISH LANGUAGE REQUIREMENTS

The following are the English language requirements for entry into our programmes.

ENGLISH REQUIREMENTS			
Qualification	Foundation	UG	UG - Actuarial
IELTS	5.5	6	6.5
Cambridge	FCE Grade C	FCE Grade B	FCE Grade A
Pearson PTE Academic	51	57	60
MUET	-	Band 4	Band 5
SPM	C	B+	A
1119 GCE-O	C	B	A
GCSE/IGCSE	C	B	A
UEC	B4	B3	A2
TOEFL IBT	70	80	90

In order to study effectively at Heriot-Watt, you need excellent English language skills. For those who need assistance and do not meet the English entry requirements above, Heriot-Watt University Malaysia provides a Pre-Sessional English Programme (PSEP). Find out more about our PSEP on our website: <http://bit.ly/hwumenglish>

If your country's qualification is not listed, or you have any questions, contact our Recruitment and Administrations Office: MYadmissions@hw.ac.uk

DISCLAIMER OF LIABILITY

Heriot-Watt University will make all reasonable efforts to deliver the programmes described in this brochure.

Prospective students should be aware that it is occasionally necessary to modify, discontinue or combine programmes and/or make changes to entry requirements. This may be necessary for a number of reasons such as low enrolments, illness or departure of staff, industrial action or reduction of funding. Changes will only be made if the University reasonably considers it to be necessary.

If a programme is discontinued, the University will use reasonable endeavours to provide a suitable alternative and will take all reasonable steps to minimise

disruption, or allow a student to withdraw without penalty if a programme is cancelled or significantly varied, with an appropriate refund of tuition fees and deposits.

Heriot-Watt University is a registered Trademark. The logo is a trademark of the University. Neither can be used unless prior written permission has been obtained. All information is correct at the time of going to print.

Heriot-Watt University is a Charity registered in Scotland. SC000278. © Heriot-Watt University, January 2020. All rights reserved.

HOW TO APPLY



Heriot-Watt
University
Malaysia accepts
applications all
year round.

APPLY ONLINE

You can apply online for our programmes at bit.ly/HWUMApply. You must create an account to use the online application form. You don't have to complete the application in one session; you can save the information you have already entered and return to complete it at a later date. There is a help facility on each page of the online form.

SUPPORTING DOCUMENTS

Please remember to upload supporting documents so that we can make a decision on your application. This includes proof of English language proficiency and original or certified copies of academic transcripts.

Please refer to the supplemental item checklist on the Online Application form:

▶ <http://bit.ly/hwumaccount>

See website for details of fees:

▶ www.hw.edu.my/fees



Scan to Navigate
to Our Location

Follow Us



/hwumalaysia



@hwumalaysia



/bit.ly/hwumvideos



heriotwattmalaysia

www.hw.edu.my

Open for consultation:
Monday to Friday (9am - 5pm) and Saturday (10am - 4pm)

Heriot-Watt University Malaysia (DU1N007(WP))
No. 1, Jalan Venna P5/2, Precinct 5, 62200 Putrajaya

☎ +603-8894 3888 📞 +6012-651 2599 ✉ HWUM@hw.ac.uk 📄 facebook.com/hwumalaysia