



UK | DUBAI | MALAYSIA

BE FUTUREMADE

BUILT ENVIRONMENT

FutureMade is to look to the future, strive for better, aim for higher, make history. A future that mirrors our pioneering roots in 1821, the year we founded the world's first Mechanics Institute. By choosing to study at Heriot-Watt today you will become part of a community working across boundaries and cultures. Collaborating with international business and industry to tackle the global challenges faced by the world we live in. Heriot-Watt undergraduates are highly employable and sought after by the best organisations worldwide.

Be **FutureMade**
▶ hw.ac.uk/Malaysia

**LOOK TO THE FUTURE.
STRIVE FOR BETTER.
AIM FOR HIGHER.
MAKE HISTORY.
BE AMBITIOUS.
BE BOLD.**

WE DEVELOP RESILIENT GRADUATES

Heriot-Watt University is aware of the challenges the youth of today face in terms of maintaining a healthy mindset, managing stress as well as developing meaningful social relationships in a landscape that has also become increasingly digitised. The university is no stranger to pioneering the global educational landscape with world-class programmes enhanced with a unique Positive Education approach.

With Positive Education, focus is also directed at the development of students' emotional intelligence as they are taught coping strategies in managing their time effectively, cultivating a positive mindset, and developing self-confidence, interpersonal and communication skills and a sense purpose.

At Heriot-Watt University Malaysia, we empower our students to be successful in their studies in terms of guidance and teaching methodology, in an environment engineered to facilitate their holistic growth from the Foundation level right up through their Undergraduate degree.





Youth Transformation Programme (YTP)

Specially created for post-secondary school students, the Youth Transformation Programme has been designed to support every student to realise their full potential.

Students are encouraged to engage in a positive transformation by focusing on developing their emotional intelligence and creativity, understanding their own personalities, strengths and weaknesses, and developing a long-term vision and mission. This is done by setting realistic SMART goals through engaging and interesting activities. Using a proven emotional intelligence framework and engaging activities focusing on expressing positive emotions such as empathy and gratitude, students are taught self-awareness, self-management, social awareness and relationship management.

On completion of the YTP, students will develop a strong sense of self-confidence and an ability to express their emotions in a positive way, and be able to relate comfortably to their peers and better manage their relationship with friends and family, paving the way for a smooth transition to and preparing them for the challenges of University studies.

The YTP is open to students who have achieved a minimum of 5Cs in relevant subjects in SPM, IGCSE or equivalent. The programme objectives are:

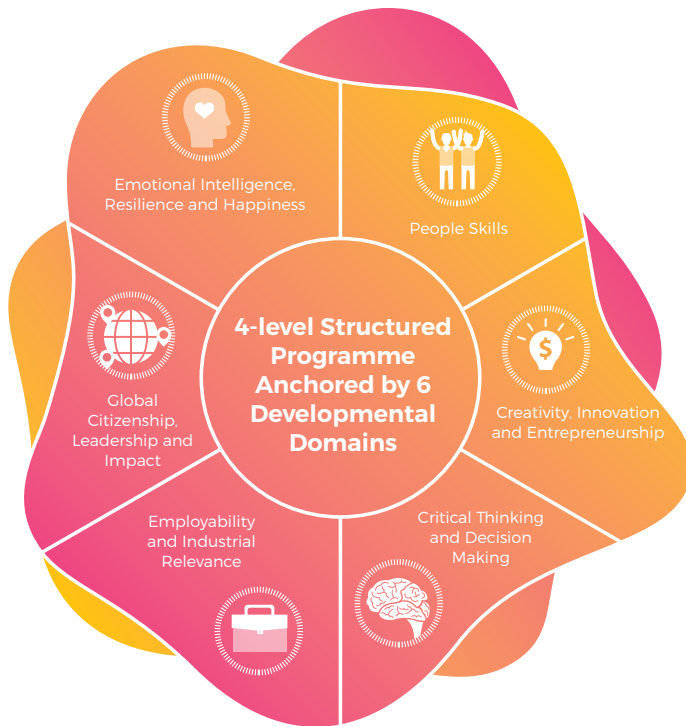
- **Develop your own Vision and Mission**
- **Collaborate effectively to accomplish a project**
- **Identify your strengths, passion and potential**
- **Discover your study and career pathway**

The following are some of the workshops under the YTP:

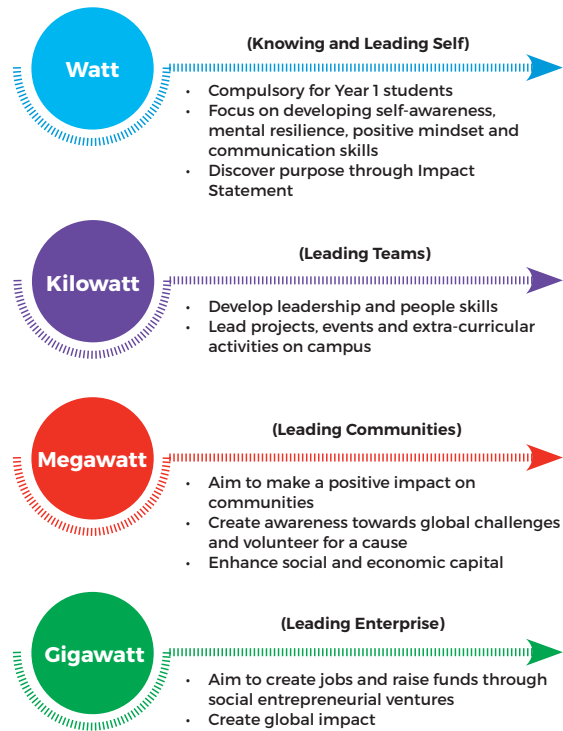
- **The Successful Mindset**
- **Ace It with Communication**
- **Creativity and Innovation**
- **Team Dynamics**
- **Emotional Intelligence**
- **Rewiring Your Brain**
- **Knowing Me, Myself and I**
- **Career Planning**
- **Project Showcase**

EmPOWER Programme

FEATURES



LEVELS



**Global
Citizenship,
Leadership &
Impact**



**Emotional
Intelligence,
Resilience &
Happiness**



**People
Skills**



**Creativity,
Innovation &
Entrepreneurship**



**Critical
Thinking &
Decision
Making**



**Employability
& Industrial
Relevance**

Watt Knowing & Leading Self	<ul style="list-style-type: none"> Defining impact (Impact Statement) Leadership style awareness 	<ul style="list-style-type: none"> Self-awareness Self-management Active & healthy lifestyle 	<ul style="list-style-type: none"> Effective communication Time management Gratitude 	<ul style="list-style-type: none"> Divergent thinking Facilitating discovery Opportunity finding 	<ul style="list-style-type: none"> Brainology Thinking biases Brain neurology Reframing & positive framing 	<ul style="list-style-type: none"> Preparing CV LinkedIn profile Career planning Career fair Prof. dev. plan
Kilowatt Leading Teams	<ul style="list-style-type: none"> Influencing through impact Awareness of the global challenges 	<ul style="list-style-type: none"> Social awareness Relationship management Return on failure 	<ul style="list-style-type: none"> Effective collaboration 	<ul style="list-style-type: none"> Lean startup Creating products, processes & services 	<ul style="list-style-type: none"> Evaluating claims Analysing inferences 	<ul style="list-style-type: none"> Business etiquette Applying knowledge in industrial contexts
Megawatt Leading Communities	<ul style="list-style-type: none"> Widening impact Resolving ethical challenges 	<ul style="list-style-type: none"> Leading at the happiness project 	<ul style="list-style-type: none"> Negotiation, mediation & persuasion 	<ul style="list-style-type: none"> Financial literacy Appreciating market & customers Raising funds 	<ul style="list-style-type: none"> Weighing decisions Analysing challenges 	<ul style="list-style-type: none"> Global industrial placement (work global)
Gigawatt Leading Enterprise	<ul style="list-style-type: none"> Global impact System thinking 	<ul style="list-style-type: none"> Supporting those under their care emotionally 	<ul style="list-style-type: none"> Lifelong learning 	<ul style="list-style-type: none"> Running an enterprise Blue ocean strategy 	<ul style="list-style-type: none"> Assessing risk 	<ul style="list-style-type: none"> Impacting industrial practice Creating jobs

PROGRAMME STRUCTURE



EMPLOYER TESTIMONIALS



The EmPOWER Programme enables students to be in charge of charting their developmental needs and becoming intentional lifelong learners and will definitely make Heriot-Watt University graduates both highly employable and future-ready.

AINOL YAACOB
HEAD OF COUNTRY,
BP MALAYSIA



The EmPOWER Programme is certainly a great initiative by Heriot-Watt University Malaysia to prepare graduates to be industry-ready. Students will be shaped to think about the greater purpose with focus on soft skills that are fundamental when joining the workforce. Employers are looking for that differentiating factor in today's disruptive business environment. A structured programme such as this will be beneficial to increase students' employability.

**MUHAMMAD AZMI
BIN ZULKIFLI**
ACTING CEO, INVEST KL



I am delighted to see the EmPOWER Programme promoting global citizenship and a comprehensive set of 21st Century skills amongst the students of Heriot-Watt University Malaysia. The Programme will go a long way towards making them not only highly employable but also highly impactful citizens of the world.

SARAH DEVERALL
DIRECTOR MALAYSIA,
BRITISH COUNCIL

STUDENT TESTIMONIALS



BEng (HONS)
MECHANICAL ENGINEERING

MOHAMED SYAFIQ BIN SALLEH

"The EmPOWER Programme made me realise that NO GOAL is worth missing out on! The programme has encouraged me to look inward, understand myself and analyse what is important to me. It has enabled me to understand new perspectives of my surroundings and the world."



BEng (HONS)
CIVIL ENGINEERING

VALENTINA NICSON

"The community service component of this course helped bring our Impact Statement to life. It helped to boost life skills such as leadership, teamwork and communication through how we form our group, propose an event and negotiate and manage conflict among the group members. I personally vouch for the EmPOWER Programme and would highly recommend this course to continuously EmPOWER our Heriot-Watt community."



BSc (HONS)
ACTUARIAL SCIENCE

ARISSA NOORDINA BAHARI
BT MOHD AMIR SHAHRIL BAHARI

"The EmPOWER Programme, specifically the module on Impact Statement, had the students reflect on the past, the present and the future. In the present module, students had to come up with our *ikigai*, a Japanese concept for our reason for being. *Ikigai* is the intersection between what you love, what you are good at, what you get paid for and what the world needs. Leave one out and life becomes unfulfilled."

STUDY AND SEE THE WORLD

At Heriot-Watt, you have the opportunity to enjoy a truly international experience. We are one of the world's top universities for international student mix and you have the chance to become a global student by taking part in an Inter-Campus Transfer to our Scottish or Dubai campuses.



Campus transfers are guaranteed

as long as your programme is available at the campus you are transferring to and you meet progression requirements

20%

Tuition fee waiver
off Dubai or UK
tuition fees when you transfer



Study for as little as one semester
at one of our global campuses



Study at our global campuses
until completion



Edinburgh, Orkney & the Scottish Borders, Scotland, UK



Dubai, UAE



Putrajaya, MALAYSIA

About Our Programmes

BSc (HONS) CONSTRUCTION PROJECT MANAGEMENT

KPT/JPS (R/581/6/0050) (FA4369) 06/24

Intake: January and September

This Bachelor's degree will prepare you for a career in the management of construction projects from inception to completion, including all stages of the design and construction process.

Much of the curriculum is concerned with the management and supervision of construction sites and the resource planning connected with large-scale projects. There is also a strong emphasis on construction technology as well as on courses that give students a background in valuation and procurement. There is strong demand for built environment professionals in construction sectors on a global scale; the profession of project management needs highly qualified graduates with specialist knowledge in their field as well as an awareness of the wider issues of construction project management.

This programme is accredited by the Royal Institution of Chartered Surveyors (RICS), and the Chartered Institute of Building (CIOB), as well as the Malaysian Qualifications Agency (MQA).

YEAR 1

- Construction Technology 2
- Commercial Law
- Surveying and Monitoring in the Built and Natural Environment
- Cost Modelling and Measurement
- eConstruction
- Facilities Management Principles
- Principles of Property Valuation (Optional)
- Introductory Macroeconomics (Optional)

YEAR 2

- Safety Management and Site Establishment
- Construction Technology 3
- Procurement and Contract
- Design Cost Planning and Control
- Project Planning and Implementation
- Decision Making for Management Applications in Construction
- Design for Construction
- Business Management in the Built Environment (Optional)

YEAR 3

- Cost and Value Management
- Construction Information Management
- Design Project
- Dissertation
- Construction Project Management
- Innovation in Construction Practice



BEng (HONS)/MEng CIVIL ENGINEERING

BEng: KPT/JPS (R/526/6/0083) (FA5237) 11/24
MEng: KPT/JPS (N/526/6/0108) (PA6195) 08/20

Intake: September

The programme covers the main civil engineering disciplines of structures, geotechnics, water engineering and highway engineering, and provides students with the key skills and knowledge required to become chartered civil or structural engineers.

After graduation, students are equipped to work for engineering consultants, contractors or government at management level. The core curriculum includes instruction in all main subject areas, concentrating on analysis and materials behaviour, with increasing focus on design and management in the specialisation years. Throughout, there is an emphasis on the personal development of students within a professional environment.

This programme is accredited by the Malaysian Qualifications Agency (MQA). In addition to recognition in Malaysia, we seek accreditation by UK and international professional bodies in accordance with their standard procedures.

Our degrees are offered as three-year BEng (Bachelor of Engineering) or four-year MEng (Master of Engineering) qualifications. This programme is fully accredited by the Joint Board of Moderators (JBM) from the UK, which represents The Institution of Civil Engineers, the Institution of Structural Engineers, the Chartered Institution of Highways and Transportation, and the Institute of Highway Engineers.

Our MEng programme is accredited and recognised by the Board of Engineers Malaysia (BEM).

For registration by the Board of Engineers Malaysia (BEM), the four-year undergraduate MEng programme plus a summer industrial placement are required.

YEAR 1 BEng and MEng

- Analysis of Determinate Structures
- Hydraulics and Hydrology A
- Surveying and Monitoring in the Built and Natural Environment
- Mathematics for Engineers and Scientists 3
- Civil Engineering Materials
- Stress Analysis and Element Strength
- Design Studies A - Problem Solving
- Statistics for Science

YEAR 2 BEng and MEng

- Indeterminate Structures
- Geology and Soil Properties
- Design of Steel Elements
- Transport Design, Infrastructure and Society
- Hydraulics and Hydrology B
- Geotechnics A - Intro to Soil Mechanics
- Design of Concrete Elements
- Environmental Engineering A

YEAR 3 BEng and MEng

- Geotechnics B - Soil Strength
- Dissertation 1 Civil Engineering Discipline
- Dissertation 2 Civil Engineering Discipline
- Civil Engineering Design Project
- Foundation Engineering

Plus 3 optional courses related to structural engineering, transportation engineering and water engineering.

YEAR 4 (MEng only)

- Civil Engineering Professional Design Project

Plus 6 optional courses related to structural engineering, water engineering and project management.

MEng CIVIL ENGINEERING

BEng students who meet the progression requirements for the MEng programme may transfer programmes at the end of Year 2.



BSc (HONS) QUANTITY SURVEYING

KPT/JPS (N/581/6/0050) (FA4369) 06/19

Intake: January and September

Our Quantity Surveying discipline is internationally recognised for the quality of its research and teaching and is Scotland's top rated construction management department. Our degree programmes equip graduates with the knowledge and experience necessary to ensure that built environment projects are sustainable, cost efficient and constructed to the highest standards.

Quantity surveying is about providing clients of the construction industry with financial, contractual and technical advice, and ensuring they get value for money from the buildings they construct. The modern quantity surveyor is a construction professional who may be involved in all stages of the design and construction process, from providing business strategy advice, working with architects and design team consultants through to overseeing the onsite construction phase. The quantity surveyor has a sound understanding of construction technology, project cost planning and control and contractual issues.

This programme is accredited by the Royal Institution of Chartered Surveyors (RICS), Chartered Institution of Civil Engineering Surveyors (ICES) and Board of Quantity Surveyors Malaysia (BQSM), as well as the Malaysian Qualifications Agency (MQA).

YEAR 1

- Construction Technology 2
- Commercial Law
- Surveying and Monitoring in the Built and Natural Environment
- Cost Modelling and Measurement
- eConstruction
- Facilities Management Principles
- Principles of Property Valuation (Optional)
- Introductory Macroeconomics (Optional)

YEAR 2

- Safety Management and Site Establishment
- Construction Technology 3
- Procurement and Contract
- Design Cost Planning and Control
- Measurement and Cost Evaluation
- Decision Making for Management Applications in Construction
- Design for Construction
- Business Management in the Built Environment (Optional)

YEAR 3

- Cost and Value Management
- QS Practice
- Design Project
- Dissertation
- Construction Project Management
- Innovation in Construction Practice
- Specialist Engineering Technologies 1 and 2
- Individual Project
- Optional Course(s)

Students take a total of eight courses per year including core, optional and elective courses/projects.



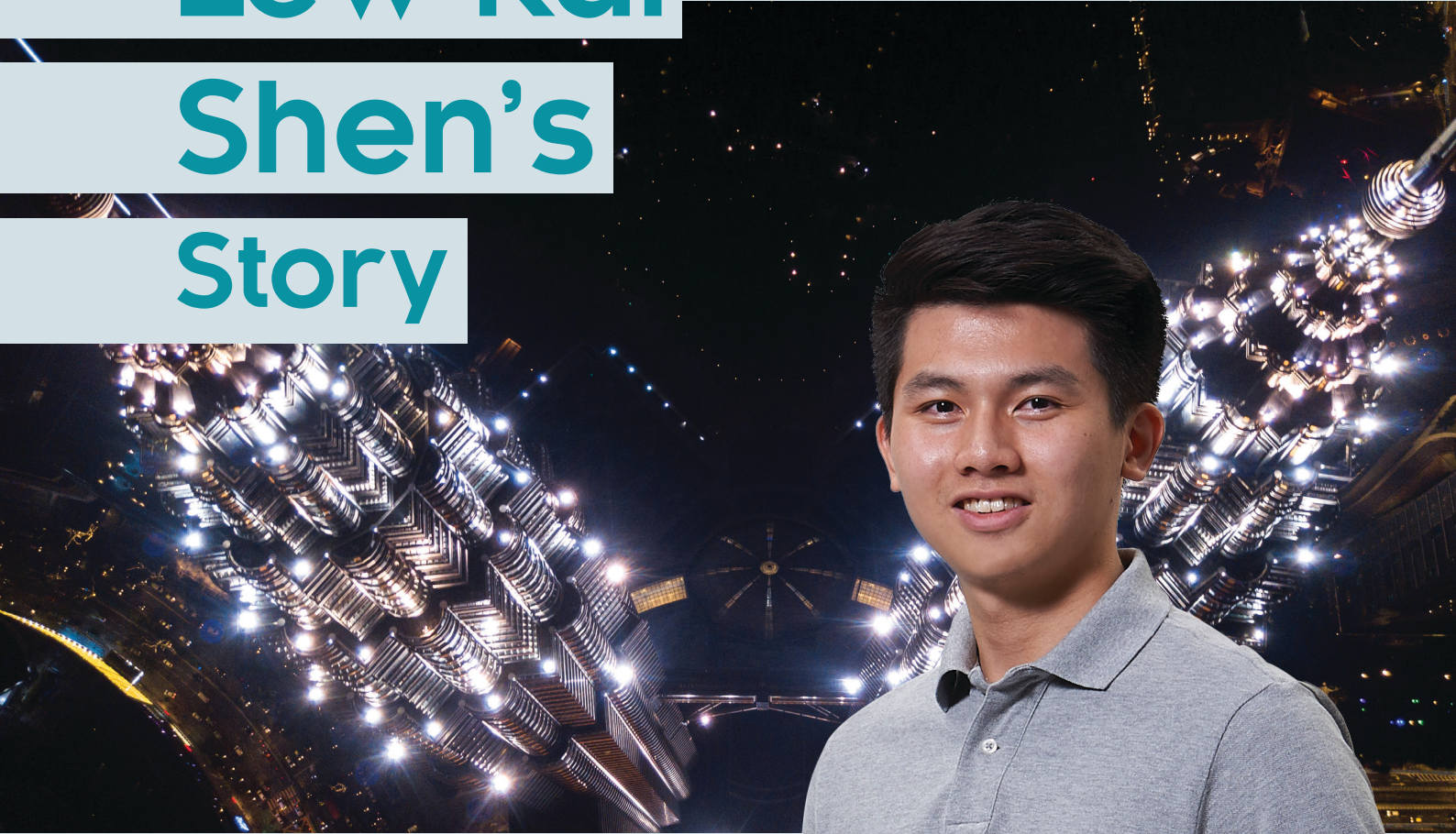
RICS

FutureMade in
Built Environment

Lew Kai

Shen's

Story



“

What I enjoy the most at Heriot-Watt is the way class is conducted. The practical session of the course allows me to gain real-world experience for the future. I think that this is very important, as what one may learn from a book may not be comprehensive enough for us to fully understand a concept.”

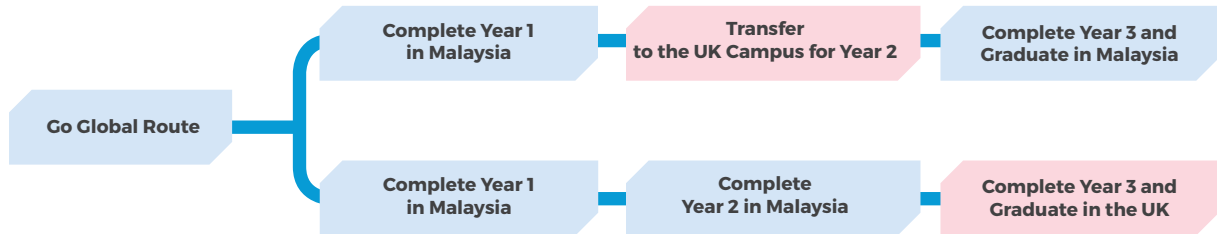
Lew Kai Shen

BSc (Hons) Quantity Surveying student
Former School:
SMK Bandar Utama Damansara (3)



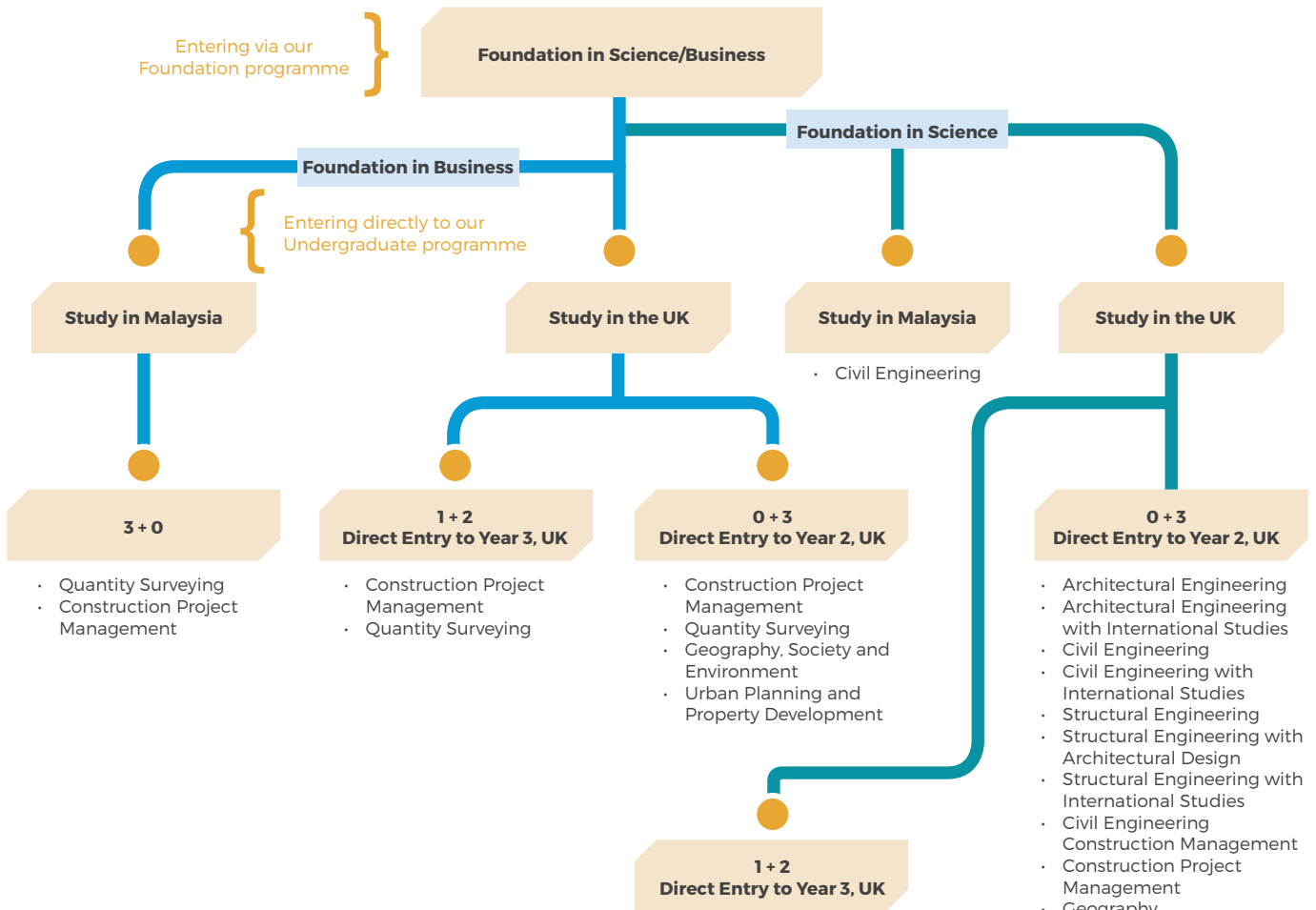
Your Study Pathway

Choose the Go Global Route



* Only possible for programmes available in both Malaysia and UK campuses

Or Choose to Study in Malaysia or Transfer Directly to the UK



Malaysia and UK Equivalency	
Malaysia Foundation Programme	Year 1, UK
Year 1, Malaysia Campus	Year 2, UK
Year 2, Malaysia Campus	Year 3, UK
Year 3, Malaysia Campus	Year 4, UK

Entry to the UK campus is contingent upon agreed progression rules and entry requirements that are set by the UK campus. Please check with the Registry when you are making plans to do your transfer.

Summary of Entry Requirements

Foundation Intakes: April, July and September

FOUNDATION PROGRAMME				
Programme Name	Qualification		Subject Requirement	
	SPM/IGCSE	SMA 3 (Indo)		
Foundation in Science	5Cs	6.0	English, Mathematics, Additional Mathematics, Physics and Chemistry	Progression to your chosen undergraduate programme may require pre-requisite subjects with specific grades at the SPM/IGCSE/Equivalent levels in addition to your Foundation results.
Foundation in Business	5Cs	6.0	English and Mathematics and other relevant subjects	
Foundation in Business (Actuarial Science Route)	5Cs	6.0	English, Mathematics, Additional Mathematics and other relevant subjects	
Foundation in Business (Psychology Route)	5Cs	6.0	English, Science, Mathematics and other relevant subjects	

UNDERGRADUATE PROGRAMMES								
Programme Name	QUALIFICATION							Pre-requisite Subjects
	STPM/A-Level	IB Diploma	SMA 3	UEC	WACE/SACE	*CPU	FiS/FiB	
BSc (Hons) Construction Project Management	BBC	26 points	8	3A 2B	ATAR 75	75%	CCCC	
BSc (Hons) Quantity Surveying	BBC	26 points	8	3A 2B	ATAR 75	75%		Minimum C in Mathematics at SPM/IGCSE or equivalent.
BEng (Hons)/MEng Civil Engineering	BBC	26 points	8	3A 2B	ATAR 75	75%		STPM/A-Level/or equivalent: B in Mathematics and Physics. UEC: A in Mathematics and Physics. SMA 3: 8.0 in Mathematics and Physics. IB Diploma: Minimum 5 in SL Mathematics and Physics.

*CPU: based on six best relevant subjects including English (average score)

ENGLISH LANGUAGE REQUIREMENTS

The following are the English language requirements for entry into our programmes.

ENGLISH REQUIREMENTS			
Qualification	Foundation	UG	UG - Actuarial
IELTS	5.5	6	6.5
Cambridge	FCE Grade C	FCE Grade B	FCE Grade A
Pearson PTE Academic	51	57	60
MUET	-	Band 4	Band 5
SPM	C	B+	A
1119 GCE-O	C	B	A
GCSE/IGCSE	C	B	A
UEC	B4	B3	A2
TOEFL IBT	70	80	90

In order to study effectively at Heriot-Watt, you need excellent English language skills. For those who need assistance and do not meet the English entry requirements above, Heriot-Watt University Malaysia provides a Pre-Sessional English Programme (PSEP). Find out more about our PSEP on our website: hw.edu.my/english

If your country's qualification is not listed, or you have any questions, contact our Recruitment and Administrations Office: MYadmissions@hw.ac.uk

HOW TO APPLY



Heriot-Watt
University
Malaysia accepts
applications all
year round.

APPLY ONLINE

You can apply online for our programmes at bit.ly/HWUMApply. You must create an account to use the online application form. You don't have to complete the application in one session; you can save the information you have already entered and return to complete it at a later date. There is a help facility on each page of the online form.

SUPPORTING DOCUMENTS

Please remember to upload supporting documents so that we can make a decision on your application. This includes proof of English language proficiency and original or certified copies of academic transcripts.

Please refer to the supplemental item checklist on the Online Application form:
▶ <http://bit.ly/hwumaccount>

See website for details of fees:
▶ www.hw.edu.my/fees

RESPONSE TO YOUR APPLICATION

All applications will be carefully considered by our admissions team and one of the following three responses will be given:

Unconditional Offer: meaning that you have been accepted to the academic programme. You must accept the offer within two weeks of receipt.

Conditional Offer: meaning that you will be required to submit additional supporting documents or achieve further qualifications prior to acceptance to the programme.

Rejection: meaning that your application regretfully could not be accepted at this time.

We will reply to you by e-mail. Please ensure that you provide us with the correct e-mail address.

Scan to
Navigate to
Our Location



Payment Reference

Name of Student
Mobile Number

Payable To

Heriot-Watt University Malaysia
SDN BHD

Account Number

5140-1102-2817

Bank Name

Malayan Banking Berhad (Maybank)

Bank Address

Floor 8, Menara Maybank,
100 Jalan Tun Perak,
50050 Kuala Lumpur,
Malaysia

Swift Code

MBBEMYKL

MYadmissions@hw.ac.uk

DISCLAIMER OF LIABILITY

Heriot-Watt University will make all reasonable efforts to deliver the programmes described in this brochure.

Prospective students should be aware that it is occasionally necessary to modify, discontinue or combine programmes and/or make changes to entry requirements. This may be necessary for a number of reasons such as low enrolments, illness or departure of staff, industrial action or reduction of funding. Changes will only be made if the University reasonably considers it to be necessary.

If a programme is discontinued, the University will use reasonable endeavours to provide a suitable alternative and will take all reasonable steps to minimise

disruption, or allow a student to withdraw without penalty if a programme is cancelled or significantly varied, with an appropriate refund of tuition fees and deposits.

Heriot-Watt University is a registered Trademark. The logo is a trademark of the University. Neither can be used unless prior written permission has been obtained. All information is correct at the time of going to print.

Heriot-Watt University is a Charity registered in Scotland. SC000278. © Heriot-Watt University, January 2020. All rights reserved.

Follow Us

 /hwumalaysia

 @hwumalaysia





 /bit.ly/hwumvideos

 heriotwattmalaysia

www.hw.edu.my

Open for consultation:
Monday to Friday (9am - 5pm) and Saturday (10am - 4pm)

Heriot-Watt University Malaysia (DULN007(WP))
No. 1, Jalan Venna P5/2, Precinct 5, 62200 Putrajaya

 +603-8894 3888  +6012-651 2599  HWUM@hw.ac.uk  facebook.com/hwumalaysia